

# GENERIC SLIDES

Your Source for Linear Motion and Positioning Solutions.

Specializing in:

Long Travels  
Heavy Payloads  
Application Specific Solutions

Quality Products Since 1971  
Terms & Conditions



**Get Your Quote Today!**

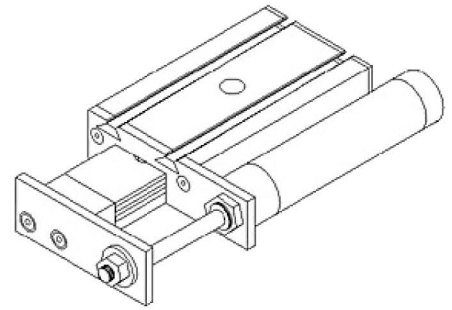


## BS Series Ball Slides



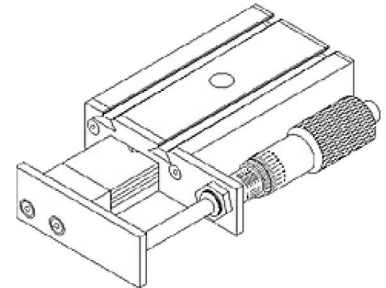
### Model No. : PS45 PNEUMATIC SLIDES

Air Cylinder Slides provide a conveniently packaged solution for lift, transfer, and alignment hole provide mounting flexibility. Standard units can be combined for multi-axis motions



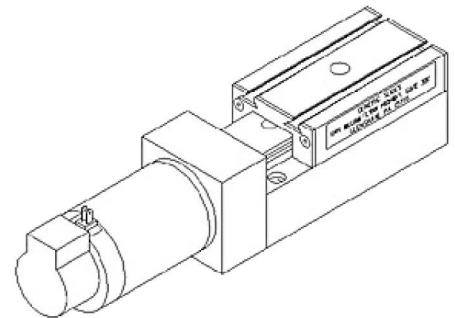
### Model No. : MS45 - MICROMETER SLIDES

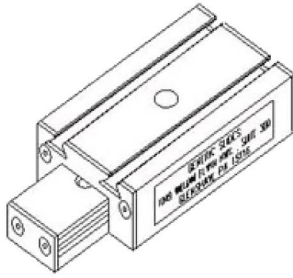
Precision micrometer adjustment allows precise and repeatable positioning of gaging, instrumentation, and optics. These slides are also used for flexible fixturing and adjustable mounting of equipment and tooling. The slide is also available in a side mounted drive configuration.



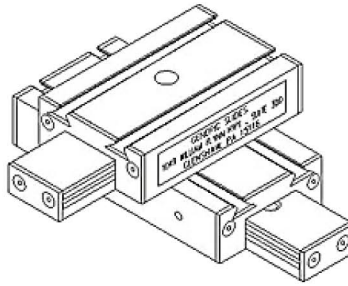
### Model No. : SS45 - LEAD SCREW SLIDES

Standard and precision lead screw slides with optional Stepper or Servo motor, drives and controllers. These actuators can be combined to create the application specific, programmable motion system best suited for your needs.

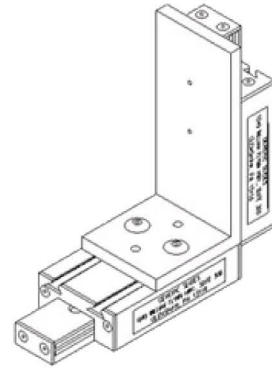




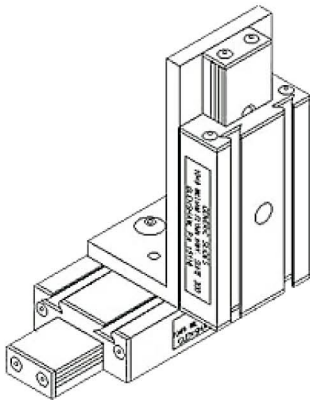
**Model No: BS45 Precision  
Ball Slide**



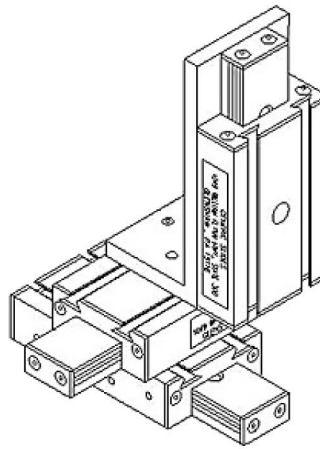
**Model No: XY45 X-Y  
Slide Assembly**



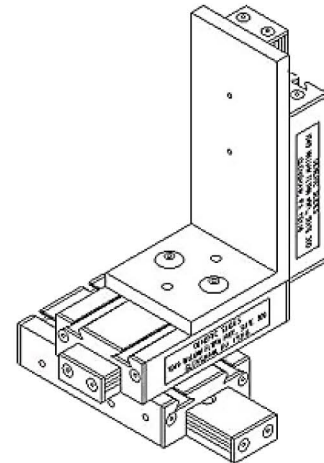
**Model No: XZ45 X-Z  
Slide Assembly**



**Model No: XZS45 X-Z  
Slide Assembly  
Side Mount Configuration**



**Model No: XYZS45 X-Y-Z  
Slide Assembly Side Mount  
Configuration**

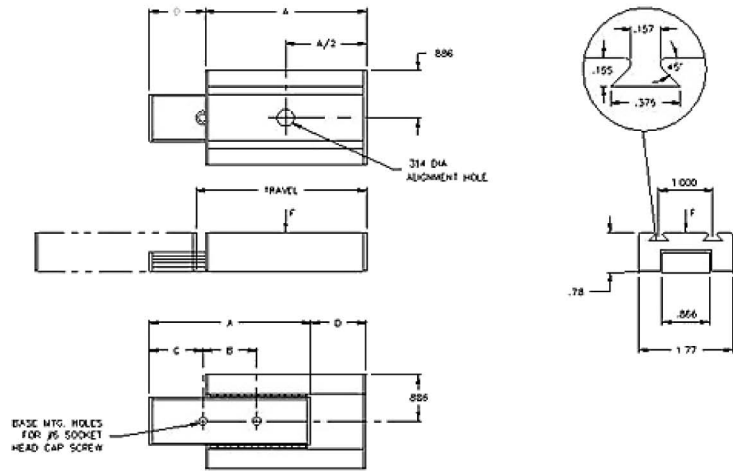


**Model No: XYZ45 X-Y-Z  
Slide Assembly**



# BS Series Ball Slides (Dimensions & Drawings)

## Drawings and Dimensions BS 45 Series



~ Custom Units Available ~

(F)

Part #	Travel	Payload	A	B	C	D	# of Mtg. Holes
BS45-1	1	28 lbs.	2.00	1.000	.500	.50	2
BS45-2	2	40 lbs.	3.00	1.000	1.000	1.00	2
BS45-4	3	60 lbs.	5.00	1.000	1.000	2.00	4
BS45-6	6	80 lbs.	7.00	1.000	1.000	3.00	6

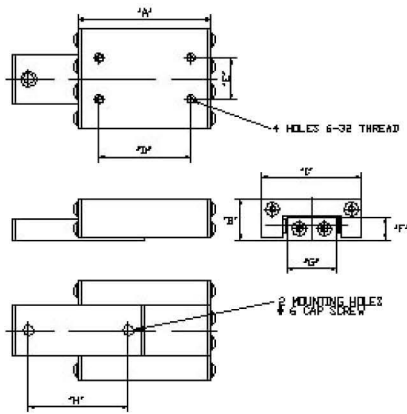
\* Travels shown are minimum travels. \*\* Payload value is for load applied at center of tabletop. (F = center of load.)

### Dovetail Nuts for use with BS45 Series Ball Slides

Part #	Thread
DN - .13	#6-32
DN - 4 M	4

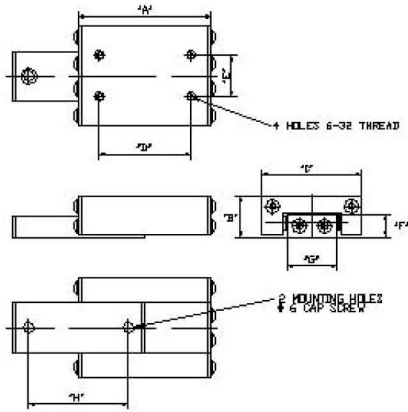
### X-Z Bracket for use with BS45 Series Ball Slides

Part #	Thread
XZBR3	#6-32 / M4
XZBR4	#6-32 / M4



Part #	Travel	Load	A	B	C	D	E	F	G	H
BST100-.5	.5	5	1.31	.5	1.00	1.250	.437	.34	.38	.875
BST100-.75	.75	10	1.56	.5	1.00	1.250	.437	.34	.38	1.125
BST100-1.5	1.5	15	2.56	.5	1.00	2.250	.437	.34	.38	2.125
BST100-2	2	25	3.56	.5	1.00	3.250	.437	.34	.38	3.125
BST100-3	3	30	4.56	.5	1.00	4.000	.437	.34	.38	3.250
BST100-4	4	35	6.00	.5	1.00	5.000	.437	.34	.38	4.000
BST150-1	1	15	2.00	.62	1.5 1	.375	.625	.34	.75	1.500
BST150-2	2	20	3.00	.62	1.5 2	.375	.625	.34	.75	2.500
BST150-3	3	25	4.00	.62	1.5 3	.375	.625	.34	.75	3.500
BST150-4	4	30	5.00	.62	1.5 5.	.375	.625	.34	.75	4.000
BST150-6	6	35	6.00	.62	1.5 7.	.375	.625	.34	.75	5.000
BST175-1	1	20	2.00	.75	1.75	1.375	.875	.400	.875	1.625
BST175-2	2	30	3.25	.75	1.75	2.625	.875	.400	.875	2.750
BST175-3	3	40	4.00	.75	1.75	3.375	.875	.400	.875	3.500
BST175-4	4	50	6.00	.75	1.75	5.500	.875	.400	.875	4.00
BST175-6	6	65	8.00	.75	1.75	7.5	.875	.400	.875	5.00

## BST Series Ball Slides



Part #	Travel	Payload	A	B	C	D	E	F	G	H
BST100-.5	.5	5	1.31	.5	1.00	1.250	.437	.34	.38	.875
BST100-.75	.75	10	1.56	.5	1.00	1.250	.437	.34	.38	1.125
BST100-1.5	1.5	15	2.56	.5	1.00	2.250	.437	.34	.38	2.125
BST100-2	2	25	3.56	.5	1.00	3.250	.437	.34	.38	3.125
BST100-3	3	30	4.56	.5	1.00	4.000	.437	.34	.38	3.250
BST100-4	4	35	6.00	.5	1.00	5.000	.437	.34	.38	4.000
BST150-1	1	15	2.00	.62	1.5	1.375	.625	.34	.75	1.500
BST150-2	2	20	3.00	.62	1.5	2.375	.625	.34	.75	2.500
BST150-3	3	25	4.00	.62	1.5	3.375	.625	.34	.75	3.500
BST150-4	4	30	5.00	.62	1.5	5.375	.625	.34	.75	4.000
BST150-6	6	35	6.00	.62	1.5	7.375	.625	.34	.75	5.000
BST175-1	1	20	2.00	.75	1.75	1.375	.875	.400	.875	1.625
BST175-2	2	30	3.25	.75	1.75	2.625	.875	.400	.875	2.750
BST175-3	3	40	4.00	.75	1.75	3.375	.875	.400	.875	3.500
BST175-4	4	50	6.00	.75	1.75	5.500	.875	.400	.875	4.000
BST175-6	6	65	8.00	.75	1.75	7.5	.875	.400	.875	5.000

### GENERIC SLIDES